

Third Saturday Seminar 2010-2011

Humanity at a Crossroads

Session 06

16 April 2011

The Arab Revolution

Curt Gibby with help from Ahmad Solomon

Current Events Segment

Curt Gibby

**ALL Program, Lone Star College – Montgomer
Conroe, Texas**

Change

There is only one corner of the universe you can be certain of improving, and that's yourself.

Aldous Huxley

Return of the Elders, Unleashing Your Wisdom

Our Middle Aged Brains

David Niesel and Norbert Herzog

Ah... if only I could stay young... instead of faking it.

No kidding! It's actually true that our brains change with age. There was a report that said forty percent of your brain cells are lost with age but that's actually not true....

Something the middle aged brain is better at doing is recognizing the central idea or big picture. So if the brain is in good shape, it can build pathways that allow it to recognize patterns and their significance and find a solution faster than a young person.

Program for TSS Meeting 16 April 2011

- **9:30 am** Introduction & Current Events (45 Minutes +/-) – *Curt Gibby*
- **10:15 am** - 10 Minute Break
- **10:25 am** – The Arab Revolution
- **11:55 am** Closing Remarks
- **12:00 noon** – Adjourn - Next Session – **21 May 2011**

Third Saturday Seminars (Spring Semester)

To refer to an ancient Chinese saying, our world is in interesting times and individual citizens are assaulted with a blinding array of propaganda from every conceivable source. The Third Saturday Seminar is about demystification of what is going on around us. Time will also be spent on current events. (Class will meet on 5/21, [6/18 TBD]. No fee to ALL members Lone Star College-Montgomery B102 Sa

16637

1/22 -5/21 9:30 a.m. - Noon

Gibby

The old Coffee Pot is dead

And, we haven't had anybody volunteer to become the next "Director of Coffee Services" so for this next meeting may we suggest that there are excellent sources of very good coffee not far from the college.

So, If you want coffee:

There are wonderful places to get coffee on Saturday mornings:

- Starbucks on the north side of Hwy 242 just east of Woodforest Bank.
- Caffe' Diem and/or Brooklyn Cafe, both on the south side in the College Park Plaza shopping center.
- There is also a McDonald's on the south side east of the shopping center and next to the Tradition Bank.

I will continue to bring donuts.

Third Saturday Seminar website is
operational but under eternal
renovation

<http://northstarinst.org/TSS/>

Disclaimer

The following presentation consists of material from many sources in addition to my own work and experience. I usually try give appropriate attribution for this material, but may have overlooked some. In many cases an Internet link to the source material is provided in order to allow you to better put these excerpts in context.

The inclusion of materials and the facts, opinions and ideas contained within them, does not in any way mean that I personally endorse or disavow any of them in whole or in part; but, that it is of importance to the discussion.

If you have any questions please contact me.

Curt Gibby <gcgconsult@n-star.com>

Before We Get Started

1. As tempting as it might be to think so, this is not a political rally for one side or another. It is a discussion of some very important real issues and questions which many, if not most of us share. Please, don't let political differences if you know about them, affect your friendships. History will tell who was right (maybe). In the meantime we need good friends, especially those who can be candid and friends at the same time.
2. By participating, we will help ourselves as well as the other seminarians deal with these important issues. Nobody has the "right answer" except for themselves. We all owe it to each other to respect and support each other. We are all Americans or guests. We will all benefit from or have to live with the outcome.
3. Please keep your remarks brief and to the point.
4. Have faith -- in each other and yourselves. **Our republic has lasted over 200 years.** We are the oldest living Constitutional democracy. Our **Constitution** limits the power of the leaders and **guarantees the rights of its citizens.** That 200 years has not all been smooth sailing. From time to time, generally in "times of war", **leaders have** usurped the authority of the Congress, **violated the Constitution and the rights of the people** who rightly or wrongly have acquiesced, being promised security. Something has always brought us back from the brink, but I don't think we ever make a full recovery. Best, we keep our rights and respect for each other intact in the first place. Let's not let anything we say or do be harmful to each other.
5. Have fun - We always do. (Sept 22, 2005)

To Any Members of Law Enforcement

If there are any members of law enforcement here in any sort of official capacity and not in a uniform recognizable as one of law enforcement we ask that you identify yourself or selves, your agency, department or organization and your official reason for being here.

Rest assured that we are engaged in no illegal activity, but we are aware of, value and have faith in our Constitutional rights.

In any case you are welcome to stay and participate as a member or guest of the Third Saturday Seminar. But, if at any time you consider anything you see or hear happening or about to happen is or will be putting any one or all of us in jeopardy of breaking the law as you understand it, we request that you advise us of that situation .

This is consistent with your obligation as a peace officer or agent to protect and serve the people. Anything else will be a betrayal and you will be derelict in your duty. It will result in harm to those you are obligated to protect.

The donuts are free to law enforcement.

I have recently been made aware that it is legal for law enforcement to lie to anyone.

4/16/11

Current Events

16 April 2011

Don't*be***Panic***ked!*

Iran's Bushehr nuclear plant - a ticking bomb?

Saudi Arabia: Second Fukushima if Iranian Bushehr activated in May
DEBKAFile Exclusive Report April 12, 2011, 12:50 PM (GMT+02:00)

Tags: [Saudi king Abdullah](#) [Obama](#) [Bushehr](#) [Fukushima](#) [Stuxnet](#) Iran's
Bushehr nuclear plant - a ticking bomb?

Saudi and Kuwait officials have warned the US that if Iran activates its first nuclear reactor at Bushehr in May as planned, there is a good chance it will blow up and the entire Gulf region suffer a nuclear disaster on the scale of the misfortune at Japan's Fukushima and expose millions to radiation contamination.

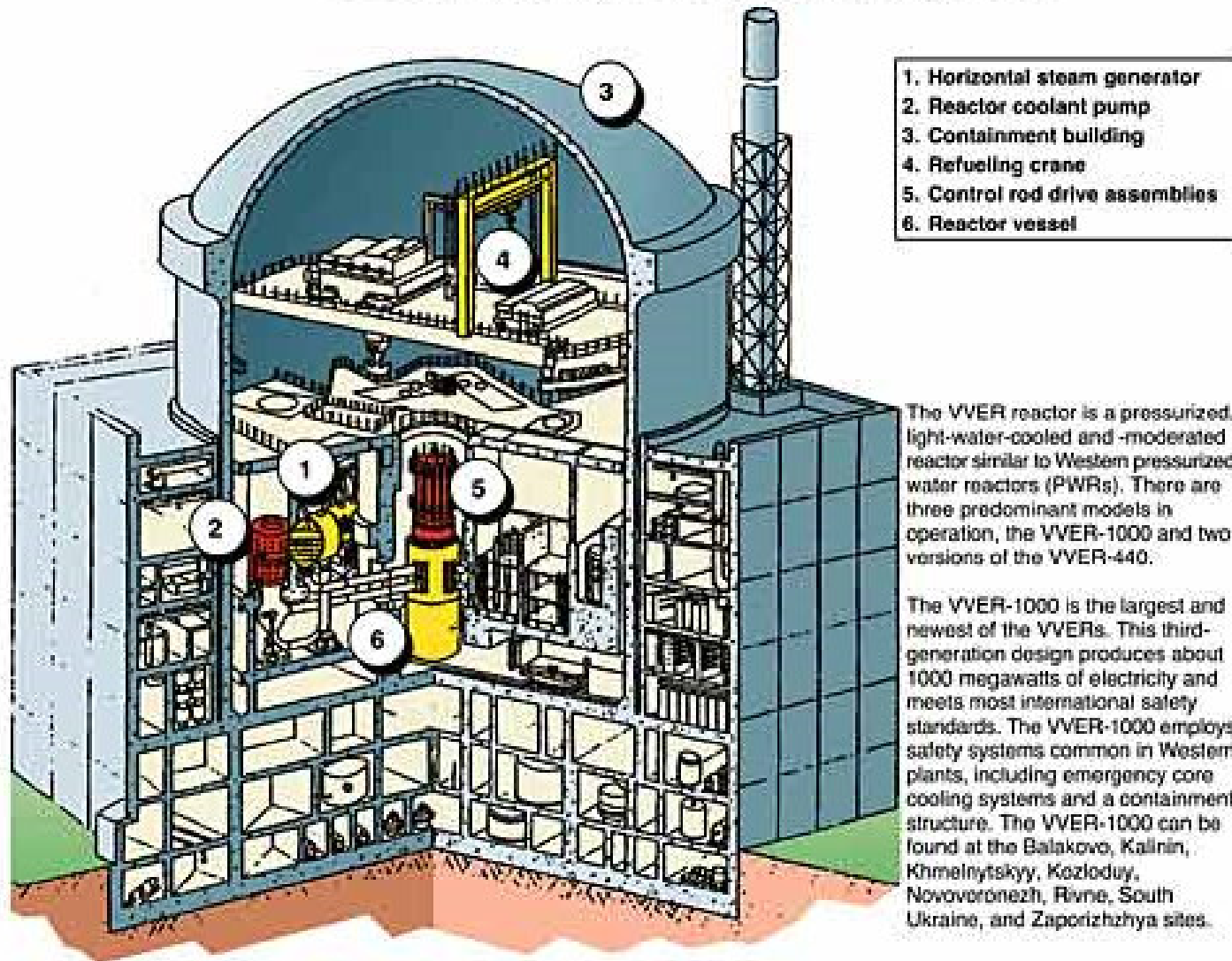
This issue was urgently raised in recent Saudi-US talks – first on April 4 with US Defense Secretary Robert Gates and again Monday, April 11, with the National Security Adviser to the US President Tom Donilon.

The two high-level US official visits to Riyadh in six days attest to the fierce discord between Saudi King Abdullah and the administration - not just over Iran and its nuclear activity but the entire gamut of US Middle East policy.

Bushehr I and II Nuclear, Iran

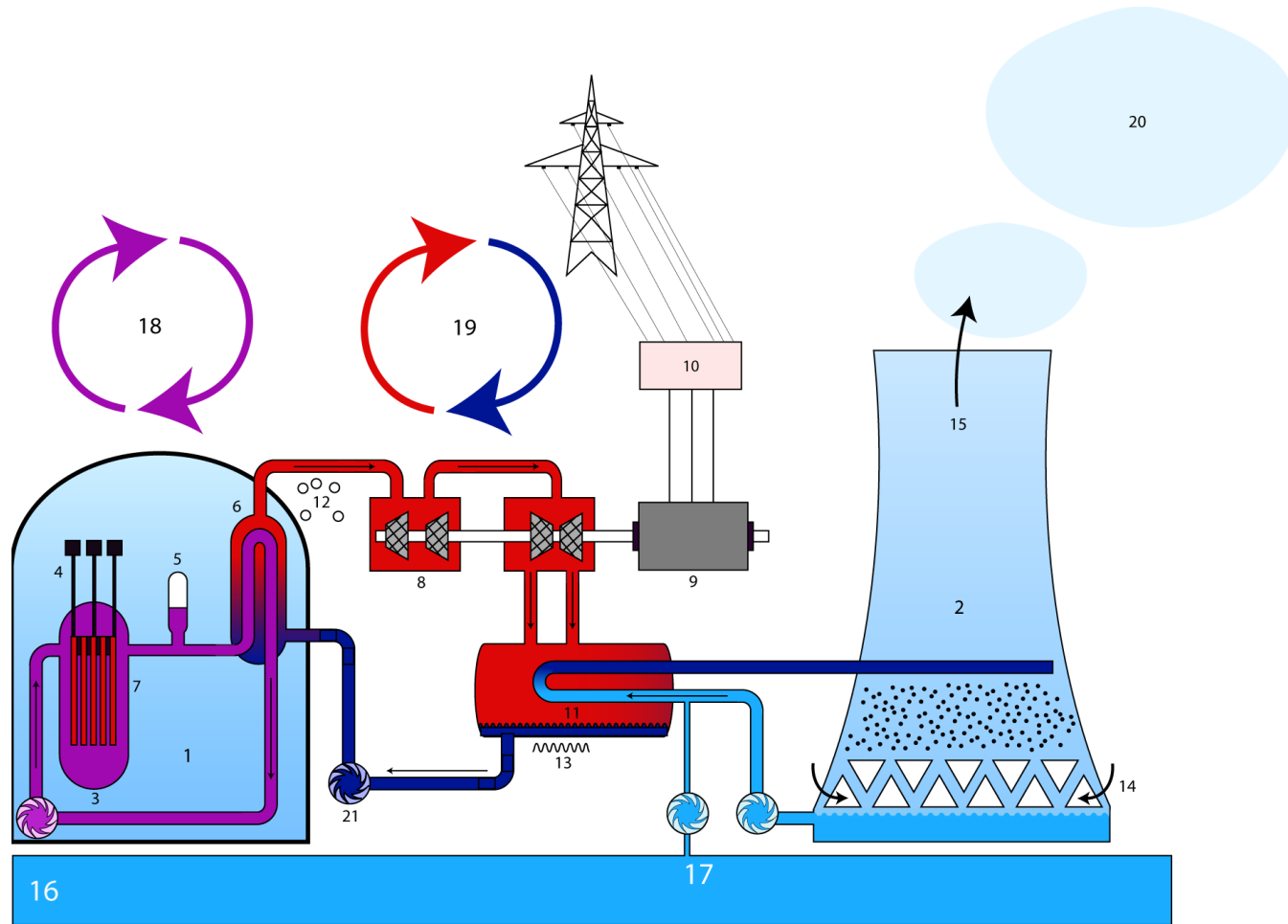


VVER-1000 Plant Layout



Courtesy of INSP

Iran's Bushehr Nuclear Reactor



Fuel loading starts at Bushehr 1 23 August 2010

<http://www.world-nuclear-news.org/newsarticle.aspx?id=28276>

In a statement, Russia's AtomStroyExport (ASE), which completed the 1000 MWe Bushehr 1 reactor under a contract with Iran, said: "This event represents the end stage of testing of all systems of the station, built by Russian specialists, and the commencement of the physical launch of the unit."

Bushehr 1 is a unique VVER-1000 pressurized water reactor (PWR), built by ASE from pre-existing site works made by Siemens. It was originally intended to be a Kraftwerk Union PWR to supply about 1200 MWe to the grid from 1981 but work the project was halted after Iran's Islamic Revolution of 1979 when only 85% completed. In 2002, ASE signed a deal to complete the unit to its own design.

Israel to Europe: Iran ships augur nuclear spread



An Iranian naval ship travels through the Suez Canal near Ismailia, some 120 km (75 miles) north of Cairo February 22, 2011.

Credit:
Reuters/Stringer

MADRID | Wed Feb 23, 2011 9:06am EST

MADRID (Reuters) - Iran's dispatch of two navy ships to the Mediterranean Sea should serve as a warning to Europe about the nuclear proliferation risk posed by Tehran, Israeli President Shimon Peres said on Wednesday.

Analysis: Libya mission is clouded by confusion

By TOM RAUM, Associated Press Tom Raum, Associated Press – Thu Mar 24, 3:06 am ET

WASHINGTON – President Barack Obama said he was setting clear and unmistakable terms for the U.S. role in Libya: It would be limited, lasting days, not weeks, and its purpose was to protect Libyan citizens.

But that's not the way it's turned out. Less than a week later, the mission has been clouded by confusion and questions about who's in charge and who's doing what — all while the killing of civilians is going on.

The Pentagon claims success in establishing an effective no-fly zone over much of Libya that has grounded Col. Moammar Gadhafi's aging air force. But Gadhafi's tanks and troops are still targeting civilians on the ground.

The administration seeks to minimize current disputes over the reins of leadership, suggesting everything will fall in place quickly, ideally by this weekend.

There are some doubters.

"It could still all come around very quickly in our favor. But if that's to happen, we will have to apply much more intensive military power in an effort to make this succeed," said Aaron David Miller, a former top State Department Mideast negotiator in Republican and Democratic administrations.

'Supermoon' Rises: Biggest Full Moon in 18 Years Occurs Saturday Night

http://news.yahoo.com/s/space/20110318/sc_space/supermoonrisesbiggestfullmoonin18yearsoccurssaturdaynight

space.com – 18 March 2011

Thanks to a fluke of orbital mechanics that brings the moon closer to Earth than that it has been in more than 18 years, the biggest full moon of 2011 will occur on Saturday, leading some observers to dub it a "supermoon."

On Saturday afternoon at 3 p.m. Eastern Daylight Time, the moon will arrive at its closest point to the Earth in 2011: a distance of 221,565 miles (356,575 kilometers) away. And only 50 minutes earlier, the moon will officially be full. [[Photos: Our Changing Moon](#)]

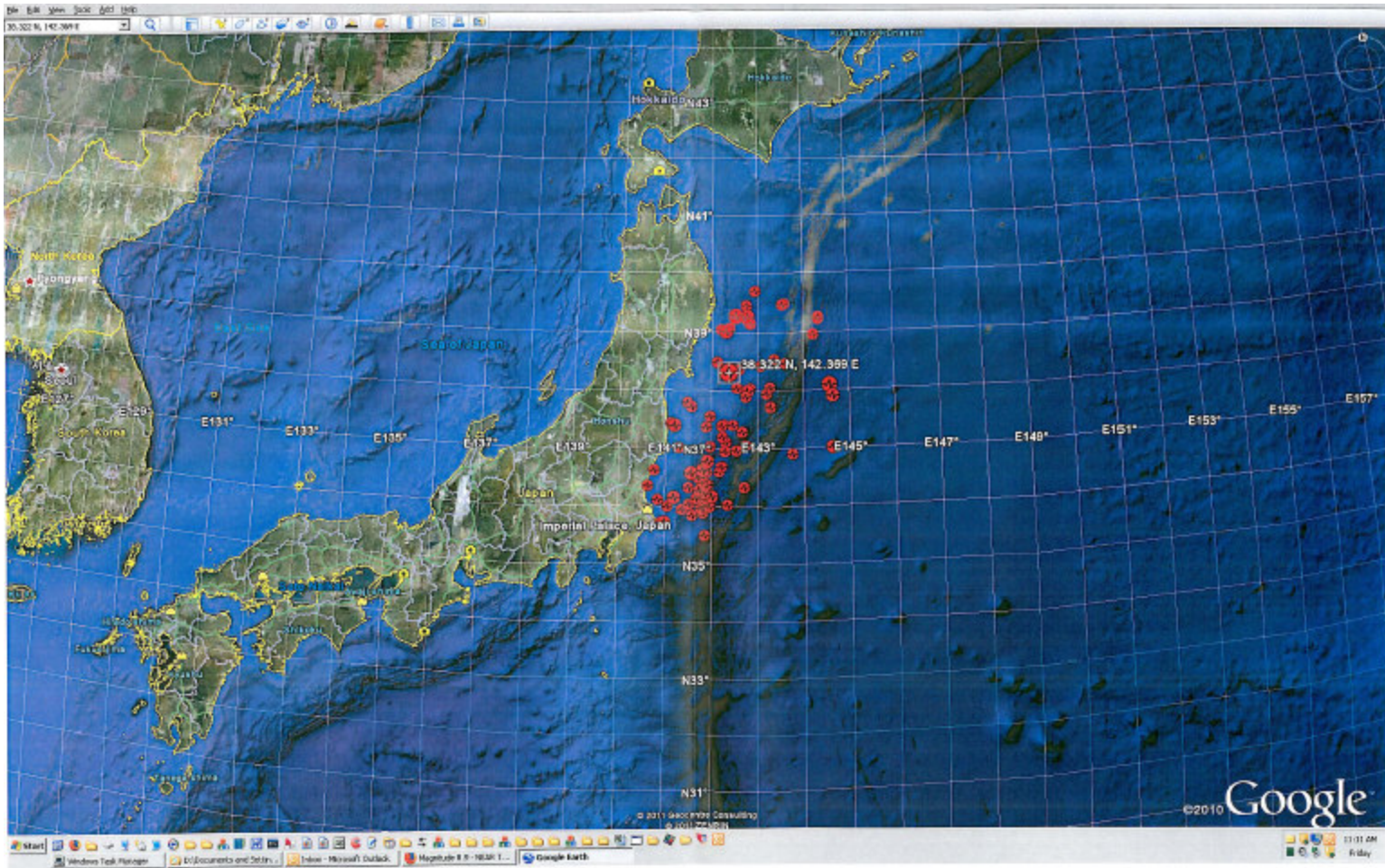
At its peak, the supermoon of March may appear 14 percent larger and 30 percent brighter than lesser full moons (when the moon is at its farthest from Earth), weather permitting. Yet to the casual observer, it may be hard to tell the difference.

The **supermoon will not cause natural disasters**, such as the Japan earthquake, **a NASA scientist has stressed**.

Supermoon making waves

In addition, the near coincidence of Saturday's full moon with perigee will result in a dramatically large range of high and low ocean tides.

http://us.rd.yahoo.com/dailynews/space/sc_space/storytext/supermoonrisesbiggestfullmoonin18yearsoccurssaturdaynight/40725798/SIG=12mt6bsov/*http://www.lifeshittlemysteries.com/supermoon-did-not-trigger-japan-earthquake-1451/



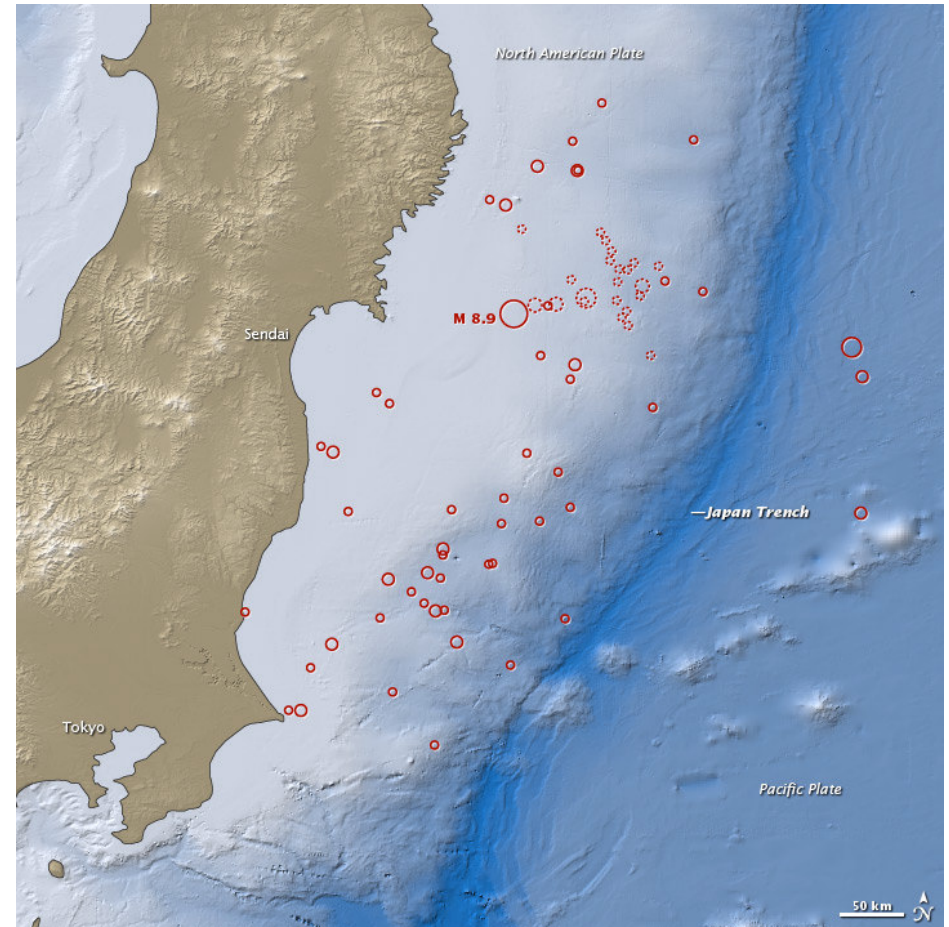
**The Great Sendai Quake was due:
Miyagi earthquake frequency is
approximately every 30 – 40 years
with large tsunamis every 800 –
1100 years
By ktwop**

**The north east of Japan is subject to
major earthquakes every 30 – 40
years. The last major quake was 32
years ago in 1978. But we have to go
back 1142 years to the 869 Jōgan
earthquake to find a similar
magnitude and accompanying
tsunami. This has led Japanese
analysts to call the Great Sendai
Quake of 2011 a one in a thousand
year event.**

<http://ktwop.wordpress.com/2011/03/13/the-great-sendai-quake-was-due-miyagi-earthquake-frequency-is-approximately-every-30-40-years-with-large-tsunamis-every-800-1100-years/>

4/16/11

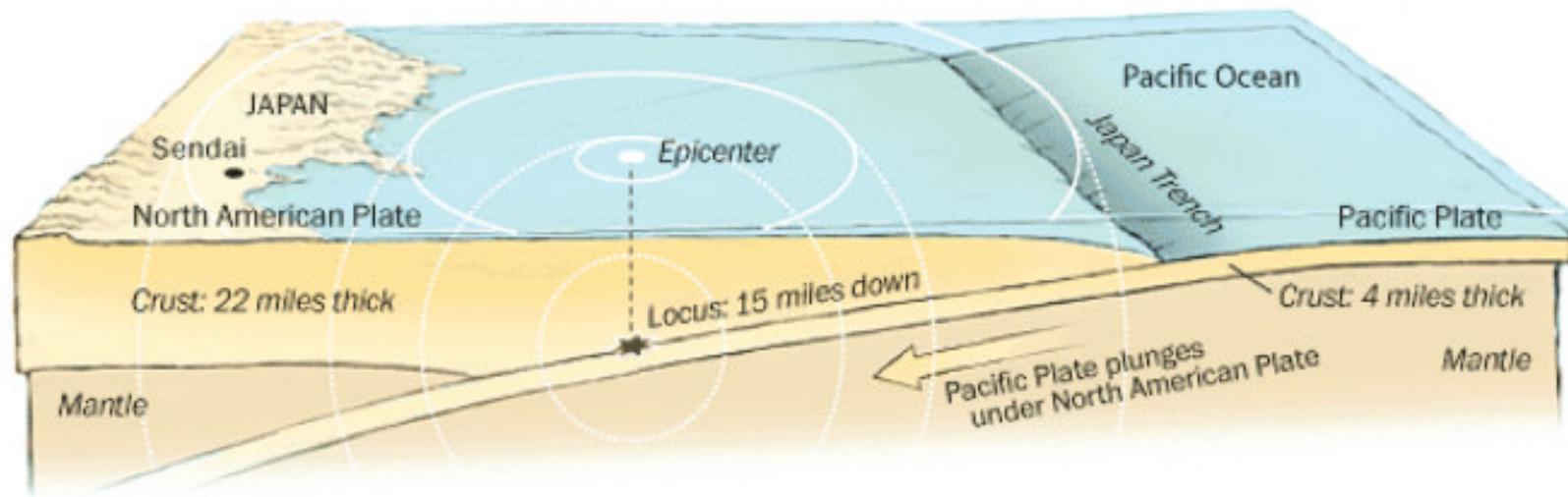
The Arab Revolution



**Earthquake and Tsunami near
Sendai March 2011: image NASA**

Anatomy of the earthquake

As huge tectonic plates in the earth's surface constantly grind against each other, jagged edges often lock together until pressure builds enough to jar them apart. On Friday, a chunk of the Pacific plate, which normally creeps westward under Japan at about three inches per year, practically leaped forward — up to 59 feet, according to USGS modeling. This quick jolt thrust undersea land upward, causing the earthquake and tsunami.



GRAPHIC: Patterson Clark and Bonnie Berkowitz - The Washington Post. Published March 11, 2011.

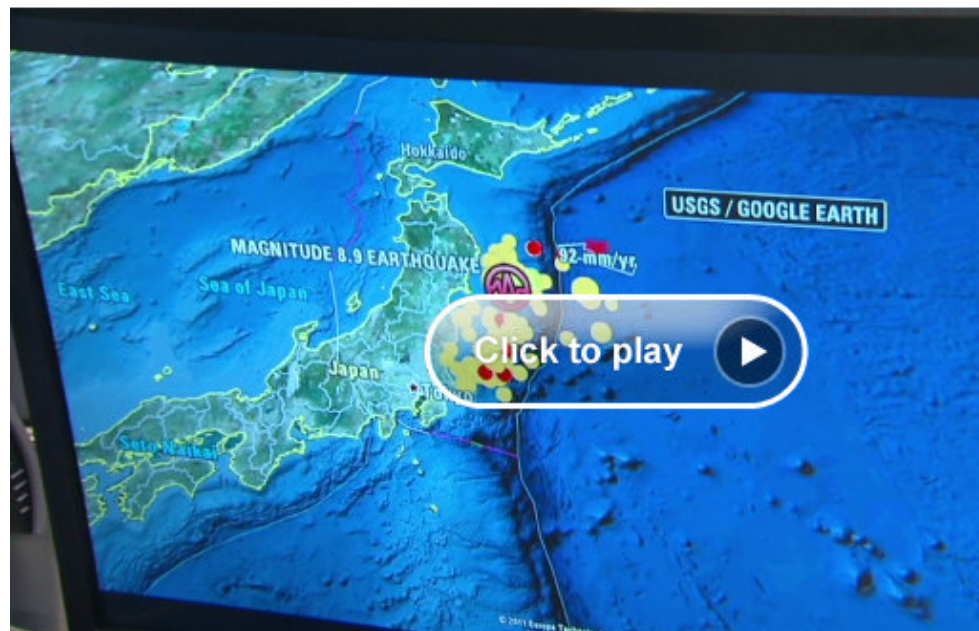
AC360°

News and commentary — direct from the AC360° newsroom

MAIN

BLOG

VIDEO



Video: What caused Japan quake, tsunami?

Posted: March 11th, 2011 02:30 PM ET

About this blog

SUBSCRIBE 

A behind the scenes look at "Anderson Cooper 360°" and the stories it covers, written by Anderson Cooper, the AC360° staff and a network of contributors. Insight you can't find anywhere else.

We search the news each day to show you what's on our radar and what we're planning for the show each night.

For more details, read our [tips on how to win 360° approval for comments](#).

Send your instant feedback to [Anderson Cooper 360°](#).

Advertisement

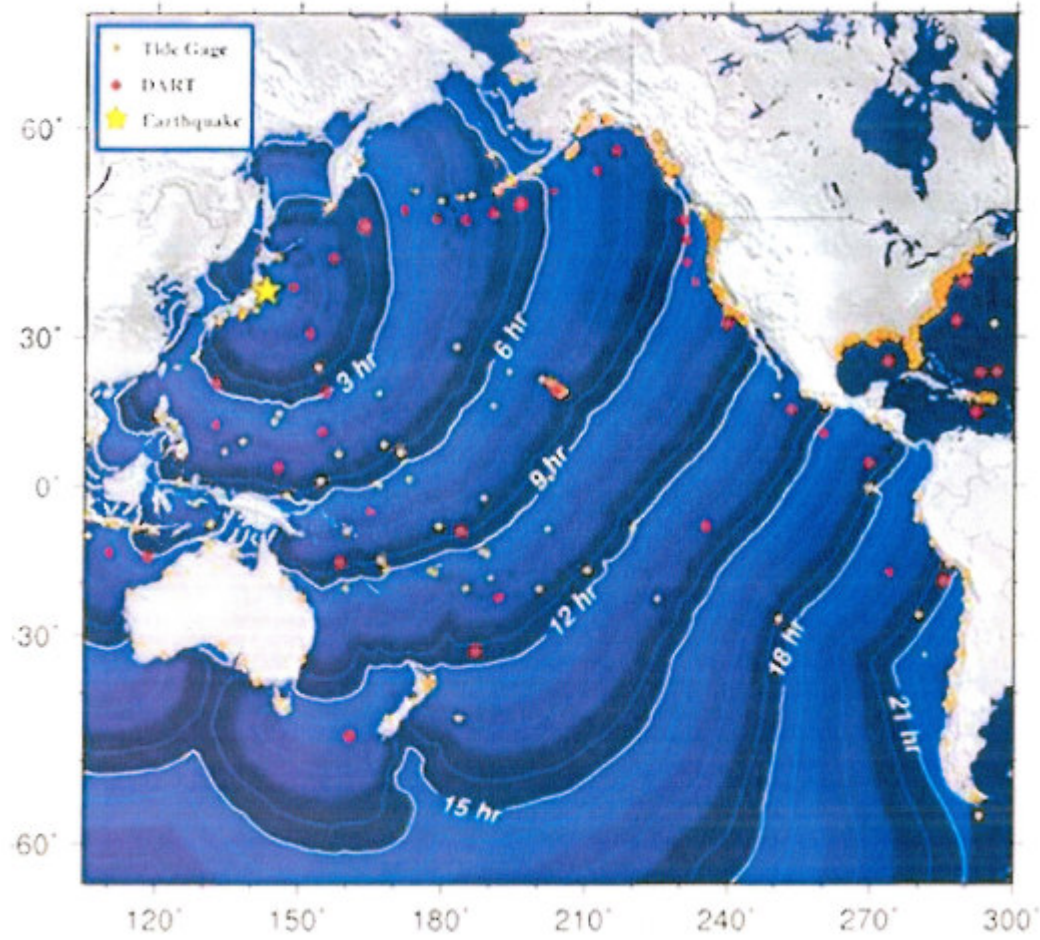
My work's never been better »

Businesses today have many specific document imaging requirements from data security and the environment, to document handling and distribution. Kyocera's newest MFP fills these requirements, in a budget conscious way.

The combination of Kyocera's unique long life technology, essential product features and consistent high-image quality engineered into Kyocera's new MFP, assures superior document handling every time. Designed with the user in mind, our new MFP delivers the core func

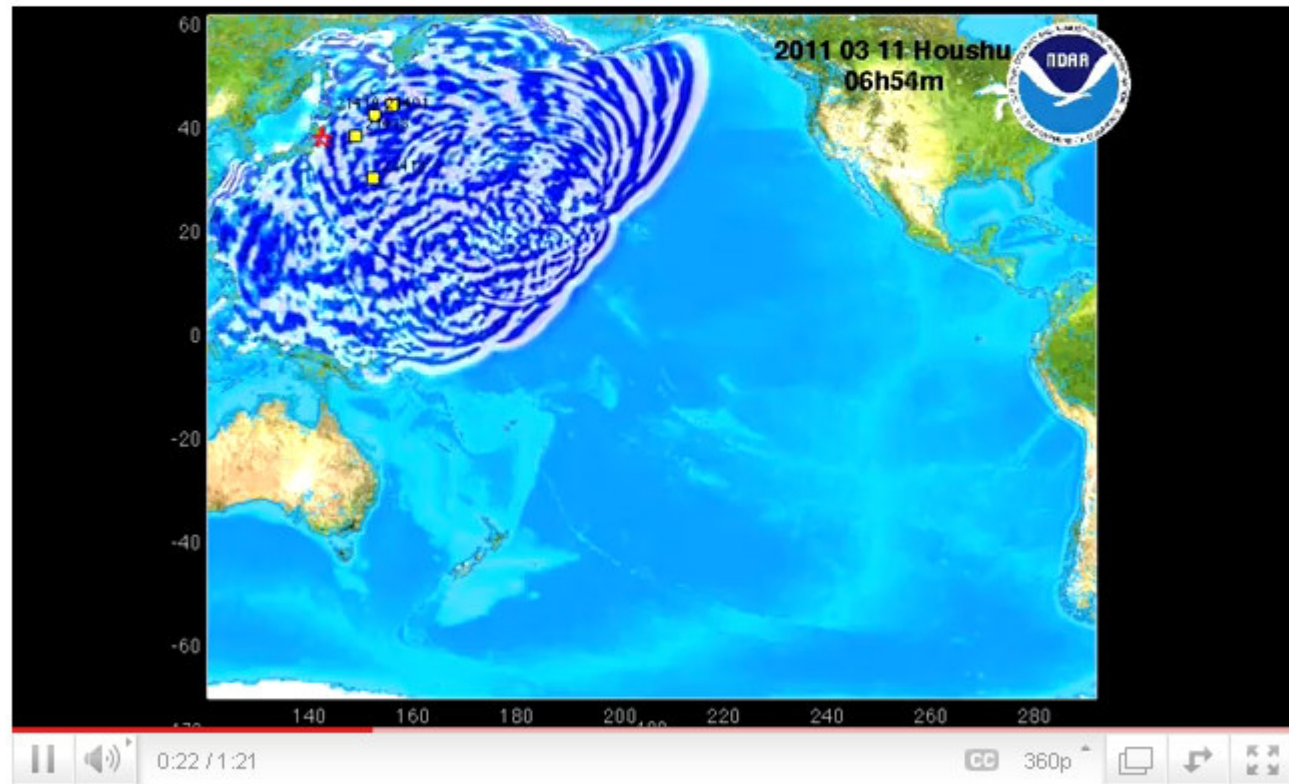


Tsunami Travel Times



Narrated animation of March 11, 2011 Honshu tsunami propagation

NOAAPMEL 19 videos [dropdown] [Subscribe]



Like [comment icon] + Add to [dropdown] Share Embed [flag icon] [print icon] 33,126 [share icon]

Tsunami surge deals blow to struggling Calif. town

AP Associated Press

[f Share](#) 5793 [retweet](#) 229 [Email](#) [Print](#)

By JEFF BARNARD, Associated Press – Sun Mar 13, 6:07 am ET



AP — ** RETRANSMISSION TO CORRECT STATE ** Boats and debris litter the water, Friday, March 11, 2011 at the ...

CRESCENT CITY, Calif. – Harbor crews are assessing the damage caused by powerful tsunami surges that pounded this northern California port, sinking or damaging dozens of boats and wreaking havoc on port facilities.

"This harbor is the lifeblood of our community," Del Norte County Sheriff Dean Wilson said as he scanned the wreckage from waves touched off by a massive earthquake in Japan late last week.

Last year saw landings of crab and fish worth \$12.5 million. "The fishing industry is the identity and soul of this community, besides tourism," he said Saturday.

The region has never recovered from the loss of the timber industry in the 1980s and 1990s, and downturns in salmon fishing, said Wilson, who fished on his father's boats as a young man.



[Slideshow: Japan hit by huge earthquake, tsunami](#)



[Earthquakes Video: Vigil For Japan at UN Church](#)

Japan's mafia among the first to organize and deliver aid

News Desk [The Straits Times](#)

Publication Date : 21-03-2011

The worst of times sometimes brings out the best in people - even in Japan's mafia, the yakuza.

***The Daily Beast* news website said that hours after the first shock waves hit, two of the largest crime groups went into action, opening their offices to those stranded in Tokyo and shipping food, water and blankets to the devastated areas.**

The website reported that the day after the earthquake, the Inagawa-kai (the third-largest organised crime group in Japan) sent 25 trucks filled with paper diapers, instant ramen, batteries, torches, drinks and other essentials to the Tohoku region.

***The Daily Beast* said an executive in Sumiyoshi-kai, the second-largest crime group, even offered refuge to members of the foreign community - something unheard-of in a still slightly xenophobic nation, especially among the right-wing yakuza, the website said.**

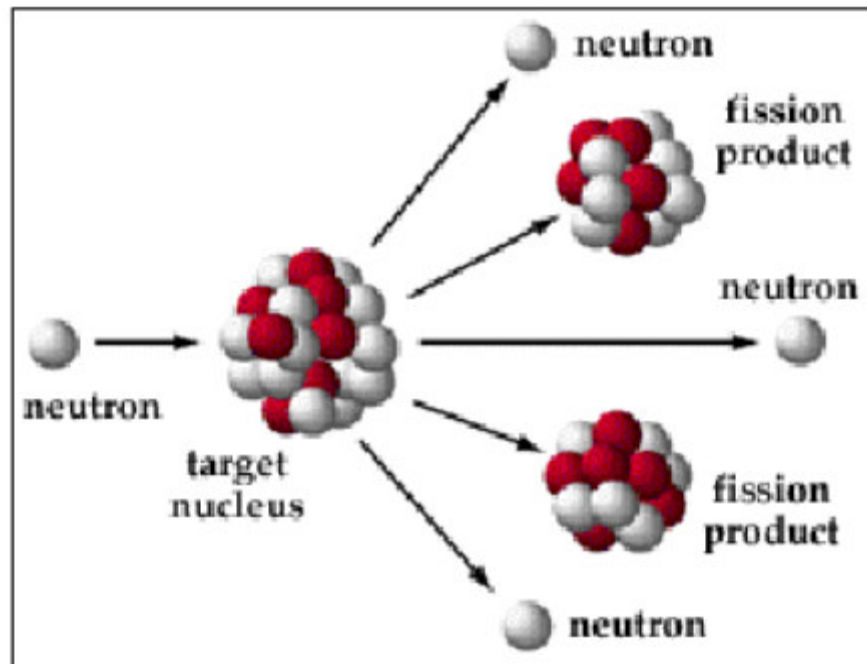
Japan's mafia among the first to organize and deliver aid Con'd

The Yamaguchi-gumi, Japan's largest crime group, has also opened its offices across the country to the public and has been sending truckloads of supplies, but very quietly and without any fanfare, the website said.

The Inagawa-kai has been the most active because it has strong roots in the areas hit. Between midnight on March 12 and the early morning of March 13, the Inagawa-kai Tokyo block carried 50 tonnes of supplies to Hitachinaka City Hall, careful not to mention their yakuza affiliation so that the donations would not be rejected.

A Brief Lesson in Nuclear Physics

The Fission Process



<http://www.wou.edu/las/physci/ch371/lecture/lecture5/sld004.htm>

Critical Mass

- If the amount of fissile material is small, many of the neutrons will not strike another nucleus and the chain reaction will stop
- The critical mass is the amount of fissile material necessary for a chain reaction to become self-sustaining.

<http://www.wou.edu/las/phyci/ch371/lecture/lecture5/sld010.htm>

Nuclear Chain Reactions

- An uncontrolled chain reaction is used in nuclear weapons
- A controlled chain reaction can be used for nuclear power generation

<http://www.wou.edu/las/physci/ch371/lecture/lecture5/sld011.htm>

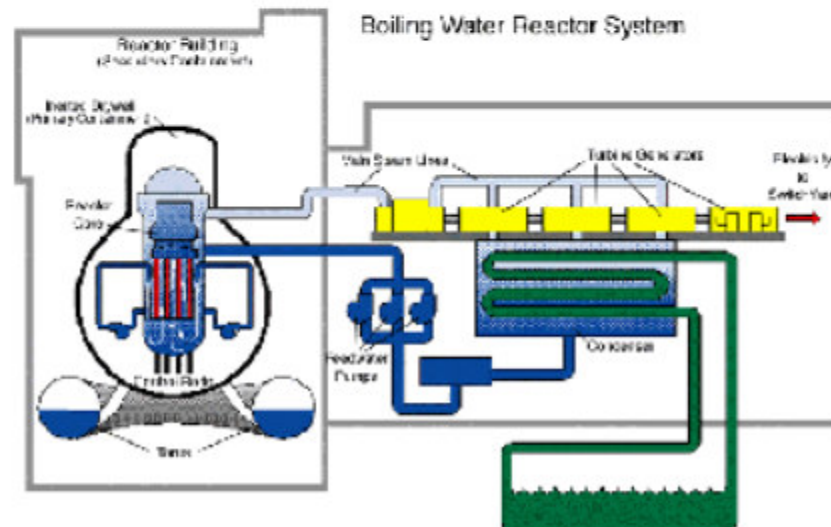
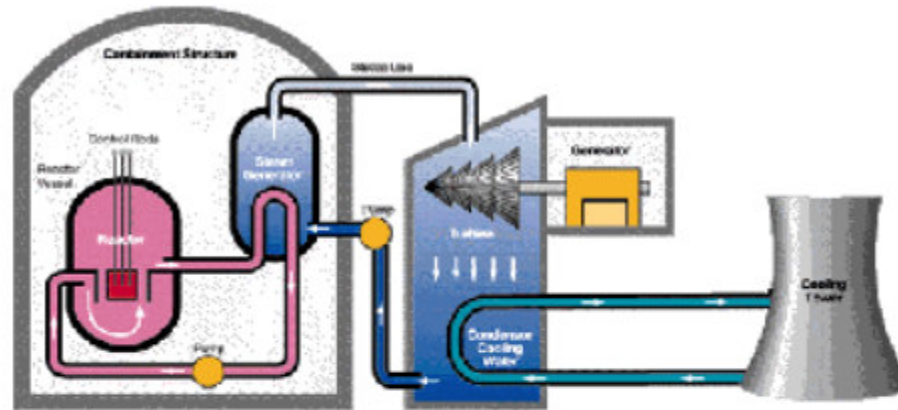
Types of Fission Reactors

- Light Water Reactors (LWR)
 - Pressurized-light water reactors (PWR)
 - Boiling water reactors (BWR)
- Breeder reactors

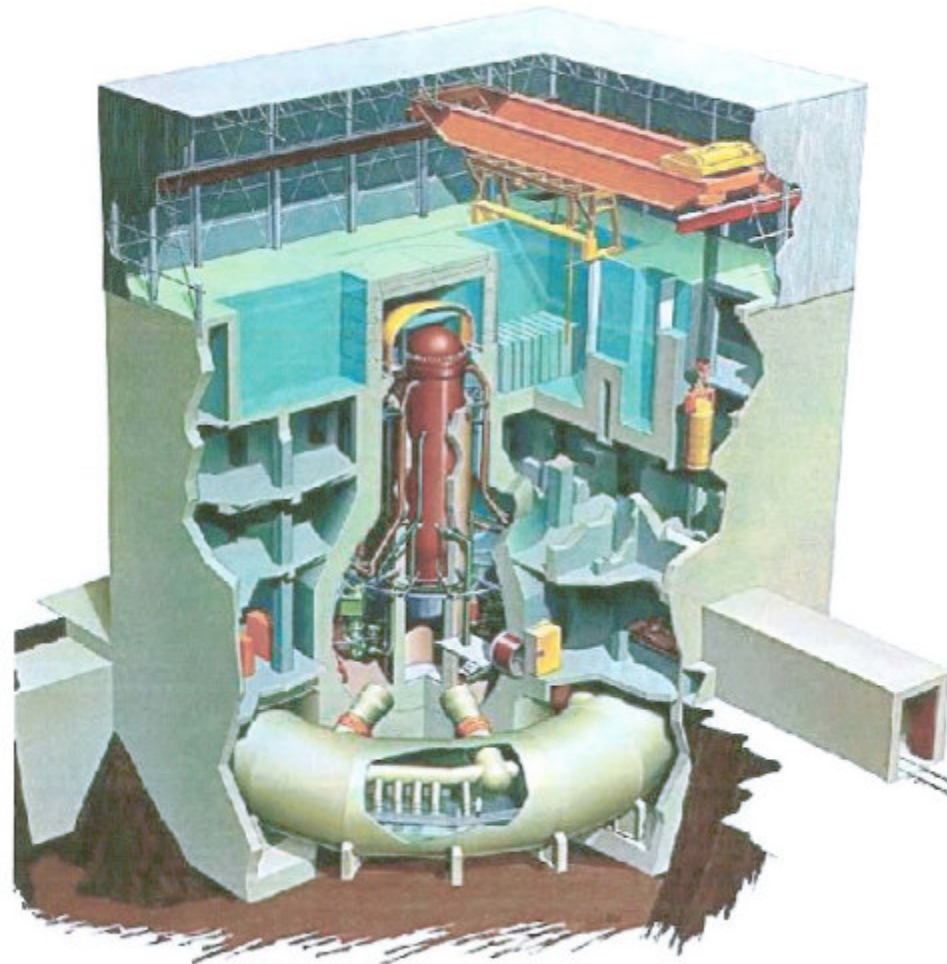
Water As Coolant

- Pressurized Water Reactors
 - uses a heat exchanger
 - keeps water that passes the reactor core in a closed loop
 - steam in turbines never touches fuel rods
 - Boiling Water Reactors
 - no heat exchanger
 - water from reactor core goes to turbines
 - simpler design/greater contamination risk
-

PWR vs. BWR



<http://www.wou.edu/las/physci/ch371/lecture/lecture5/sld033.htm>



The Fukushima I Nuclear Power Plant

(福島第一原子力発電所)

Fukushima Dai-Ichi ([pronunciation](#)) *Genshiryoku Hatsudensho*², Fukushima I NPP), often referred to as Fukushima Dai-ichi (*Dai-ichi* simply means *number 1*), is a [nuclear power plant](#) located on a 3,500,000 m² (865 acres) site^[1] in the towns of [Okuma](#) and [Futaba](#) in the [Futaba District](#) of [Fukushima Prefecture](#), [Japan](#), first commissioned in 1971. The plant consists of six [boiling water reactors](#). These [light water reactors](#)^[2] drive electrical generators with a combined power of 4.7 GWe, making Fukushima I one of the 15 largest [nuclear power stations in the world](#). Fukushima I was the first nuclear plant to be constructed and run entirely by the [Tokyo Electric Power Company](#) (TEPCO). The plant [suffered major damage](#) from the [9.0 earthquake](#) and subsequent [tsunami](#) that hit Japan on March 11, 2011, disabling the reactor cooling systems and triggering a widespread evacuation surrounding the plant.

The [Fukushima II Nuclear Power Plant](#), 11.5 kilometres (7.1 mi) to the south, is also run by TEPCO.

“Yankee” Included In Federal Review Of Nuclear Plants

[VPR News](#) Wednesday, 03/16/11 5:50pm and Thursday, 03/17/11 6:34am --- http://www.vpr.net/news_detail/90340/

[John Dillon](#) - Montpelier, Vt.

(Host) Federal officials will review the safety of all U.S. nuclear power plants in the wake of the ongoing nuclear catastrophe in Japan. But that review is not likely to halt a new federal license for Vermont Yankee.

VPR's John Dillon has more:

(Dillon) Gregory Jaczko is the chairman of the Nuclear Regulatory Commission. He testified Wednesday before the Senate Environment and Public Works Committee.

Yankee Included In Federal Review Of Nuclear Plants – Cont.

(Jaczko) "The agency intends to go forward with a systematic and methodical look at all of the plants to see if - primarily based on the incident in Japan - to see if there are any modifications or changes we need to make to our regulators."

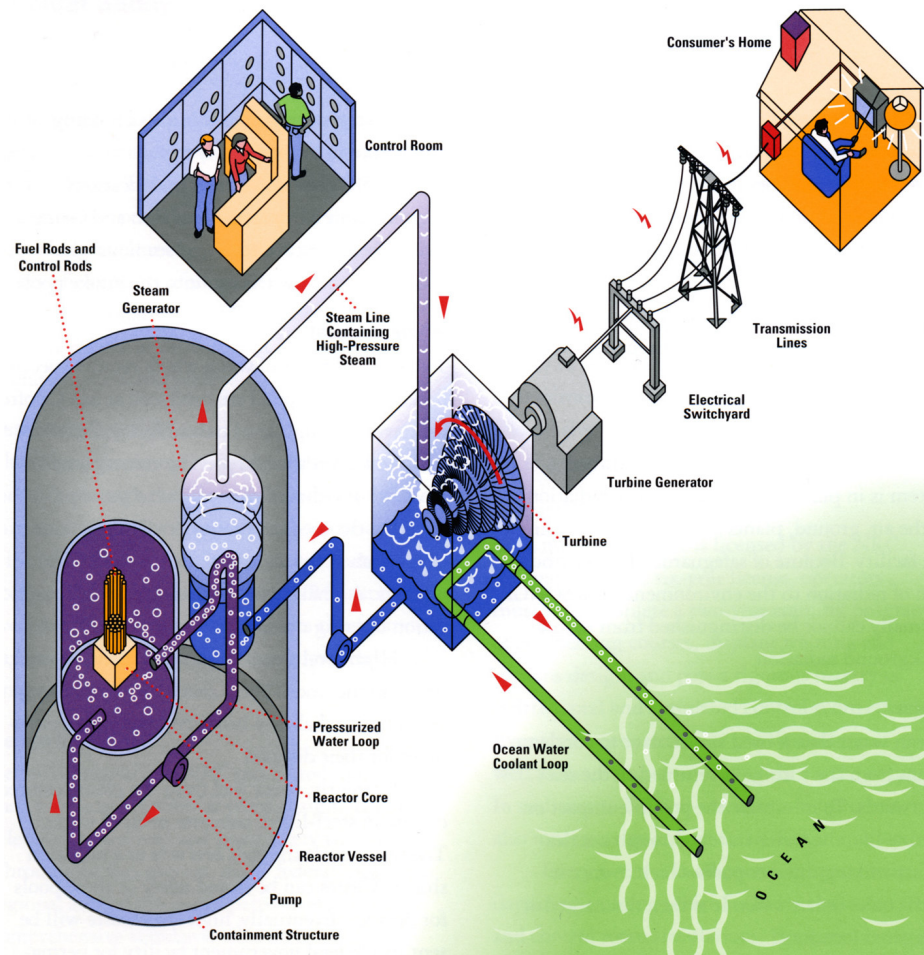
(Dillon) The Vermont Yankee plant in Vernon has the same design as the crippled Japanese reactors. The day before the earthquake struck Japan, the NRC approved Yankee's request for a new 20 year license.

Senator Bernie Sanders pressed Jaczko on how his agency could issue a new license for Yankee given the events in Japan. He said that as early as 1972 NRC officials had said the containment system used at Yankee and at the Japanese plants could burst and release radiation in a catastrophic accident.

STNP



The STPEGS reactors are operated by the STP Nuclear Operating Company (STPNOC). Ownership is divided among [NRG Energy](#) at 44 percent, San Antonio municipal utility [CPS Energy](#) at 40 percent and [Austin Energy](#) at 16 percent.^[7]



http://asset.sce.com/Images/Environment%20%20Power%20Generation/NuclearEnergy_process.jpg



Two of them are at the [South Texas Project](#), a facility in nearby Matagorda County. Buddy Eller is an STP spokesman: *“For us in south Texas we are concerned with hurricanes, storm surges and flooding. STP is built about 29 feet above mean sea level and we look at worst case scenarios from a flooding standpoint, from a storm-surge standpoint, and have built that into our criteria in the construction of our facility.”*

Eller says the reactors can withstand a category 5 hurricane, flooding, or an earthquake. They are protected by 4-foot thick walls of steel-reinforced concrete.

To ^{4/16/11}keep the reactors cool, the plant ^{The Arab Revolution} has three back-up power systems.

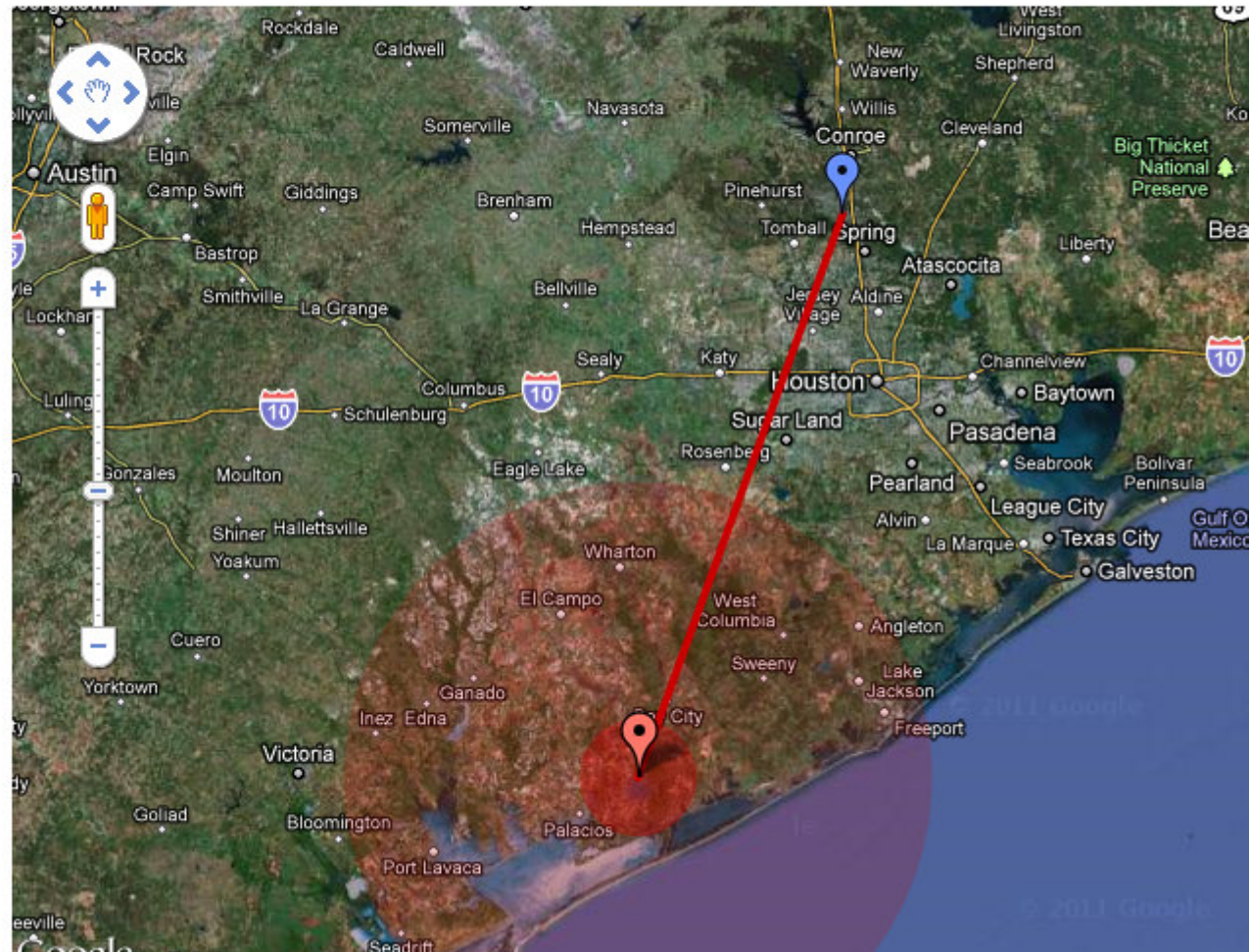
How far are we from a nuclear power plant?

Nuclear Regulatory Commission says the air could be unsafe to breathe in the event of a major catastrophe. In 50 miles, food and water supplies may be unsafe.

Enter your address or ZIP code:

Get Result

Closest Plants	Distance
South Texas 1, 2	101 mi
Comanche Peak 1, 2	200 mi
River Bend 1	249 mi
Grand Gulf 1	291 mi
Waterford 3	299 mi



http://money.cnn.com/news/specials/nuclear_power_plants_locations/index.html

Senator Barack Obama in an interview with The Boston Globe in December of 2007

“The President does not have power under the Constitution to unilaterally authorize a military attack in a situation that does not involve stopping an actual or imminent threat to the nation.”

As Commander-in-Chief, the President does have a duty to protect and defend the United States. In instances of self-defense, the President would be within his constitutional authority to act before advising Congress or seeking its consent. History has shown us time and again, however, that military action is most successful when it is authorized and supported by the Legislative branch.”

<http://punditpress.blogspot.com/2011/03/obama-in-2007-president-has-no.html>

Syrian Troops Open Fire on Protesters in Several Cities

By MICHAEL SLACKMAN

Tens of thousands of demonstrators in the southern city of Dara'a, and in some other cities around the nation, took to the streets on Friday.

<http://www.nytimes.com/?adxnnl=1&adxnnlx=1301105146-EsdskRruqpIaO/zQtLfQPg>





AT&T to cap DSL service?

All: Hot off the press from Dvorak - AT&T to cap DSL service? March 16, 2011

<http://www.pcmag.com/article2/0,2817,2382118,00.asp>

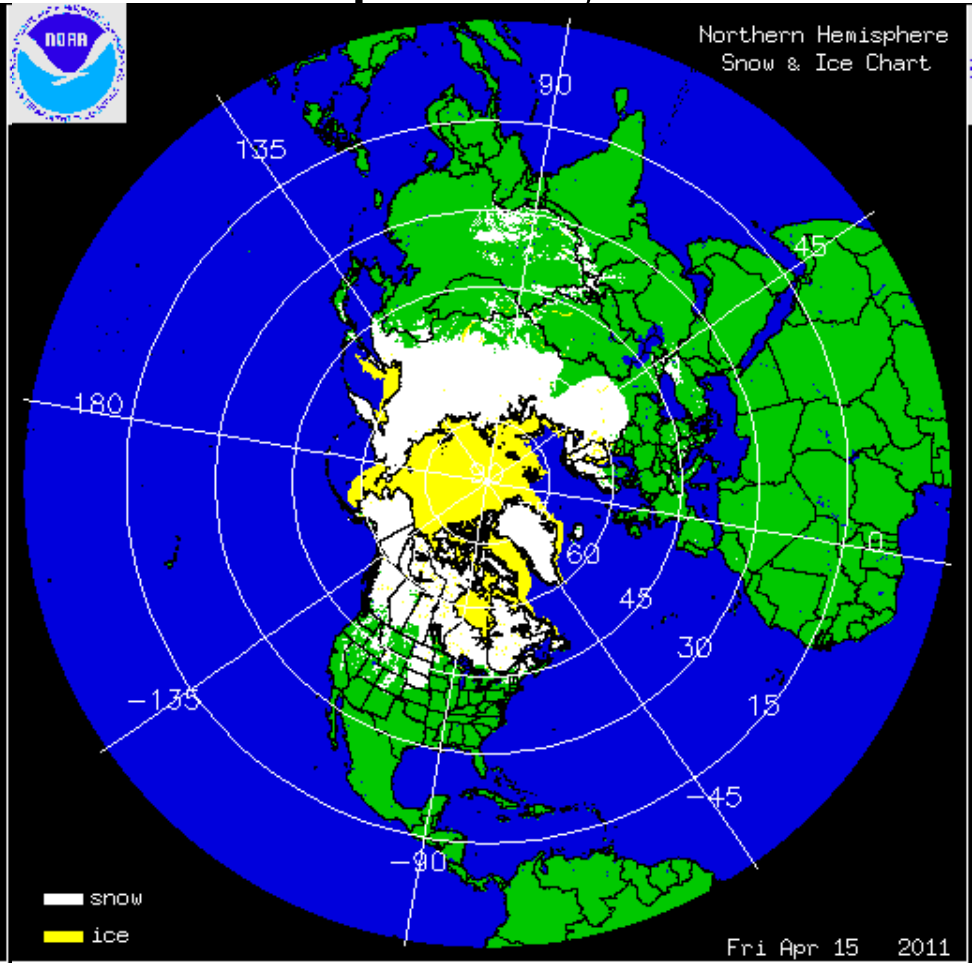
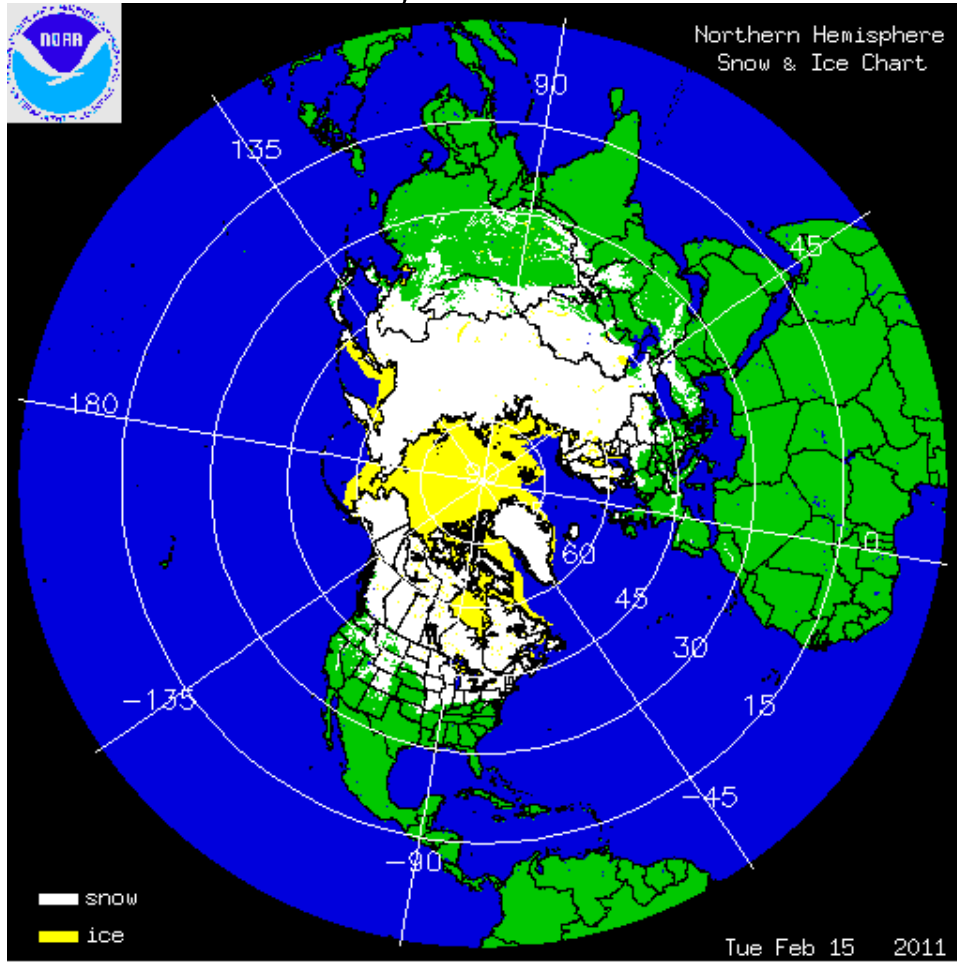
AT&T's DSL cap would just be a way for it to gouge customers with penalty charges and convince them to switch to U-verse. My advice is to avoid AT&T service alt together. So if you have UVerse, or have been contemplating dumping cable or satellite to use Internet-based streaming media (Hulu or NetFlix, for example) ... beware. Will AT&T follow through on this? And will other carriers follow their lead? (likely I would say). Granted, the current article states 150-250GB .. but if you're streaming video on a regular (daily) basis, how fast would that get exceeded? Again according to the article, they'll charge \$10 per 50G overage. Net Neutrality, anyone? Charlie

Climate Change

http://www.natice.noaa.gov/pub/ims/ims_gif/DATA/cursnow.gif

Feb 15, 2011

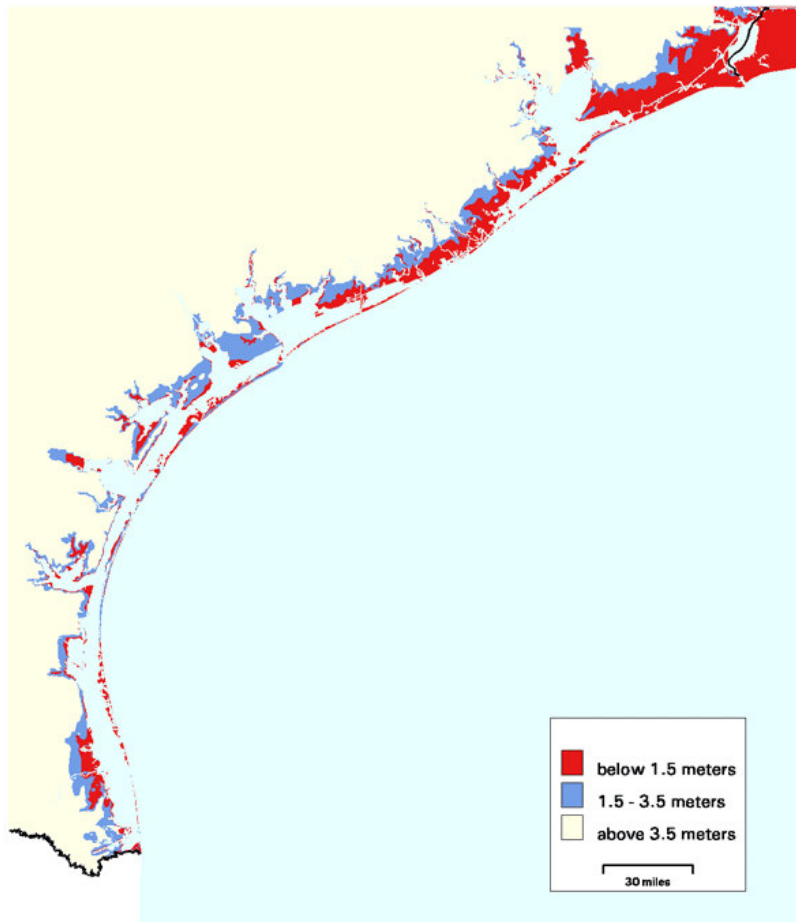
April 15, 2011



<http://www.natice.noaa.gov/ims/loop/nhem-1mo-loop.html?session-id=0e63b8b5acada13faabc21dcaf12130f>

Computer Model of Sea Level Rise (EPA)

Over the next century, sea level is most likely to rise 55-60 cm(2.2-2.4 in.) along most of the U.S. Atlantic and Gulf Coasts. The 3.5-meter contour roughly illustrates an area that might be flooded over a period of several centuries



Note: Elevations are based on computer models, not actual surveys. Coastal protection efforts may prevent some low-lying areas from being flooded as sea level rises. The 1.5-meter contour depicted is currently about 1.3-meters (4.3 ft).above mean sea level. Therefore, some of the areas depicted in red will be above mean sea level for at least 100, and probably 200, years. However, because mean spring high water (i.e., high tide during new and full moons) is typically 60 cm above sea level, the 1.3-meter contour would be flooded a few times per month by a 70 cm rise in sea level.

This picture is worth a trillion \$\$



House Minority Leader Lawrence F. Cafero Jr., R-Norwalk, pictured standing, far right, speaks while colleagues Rep. Barbara Lambert, D-Milford and Rep. Jack F. Hennessy, D-Bridgeport, play solitaire Monday night as the House convened to vote on a new budget. (AP)

The guy sitting in the row in front of these two...he's on Facebook, and the guy behind Hennessy is checking out the baseball scores.

These are the folks that couldn't get the budget out by Oct. 1, and are about to control your health care, cap and trade, and the list goes on and on....

Should we buy them larger screen computers - or - a ticket home, permanently?

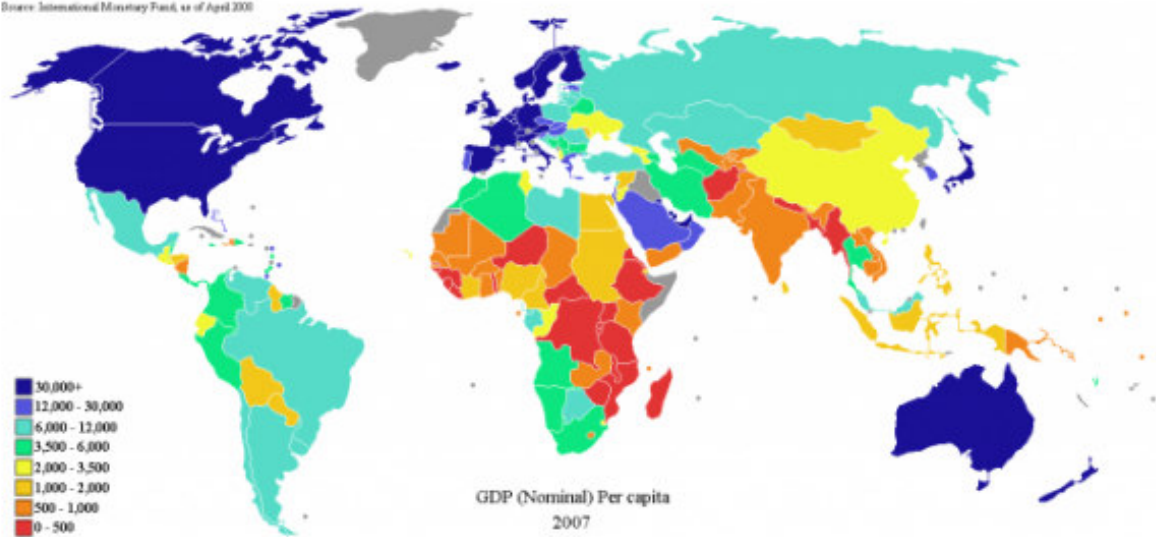
This is one of their **3-DAY WORK WEEKS** that we all pay for (salary is about \$179,000 per year)_{4/16/11}

Climate policy has almost nothing to do with environmental Protection

IPCC Official: “Climate Policy Is Redistributing The World’s Wealth”

Posted on [November 18, 2010](#) by [Anthony Watts](#)

Source: International Monetary Fund, as of April 2008

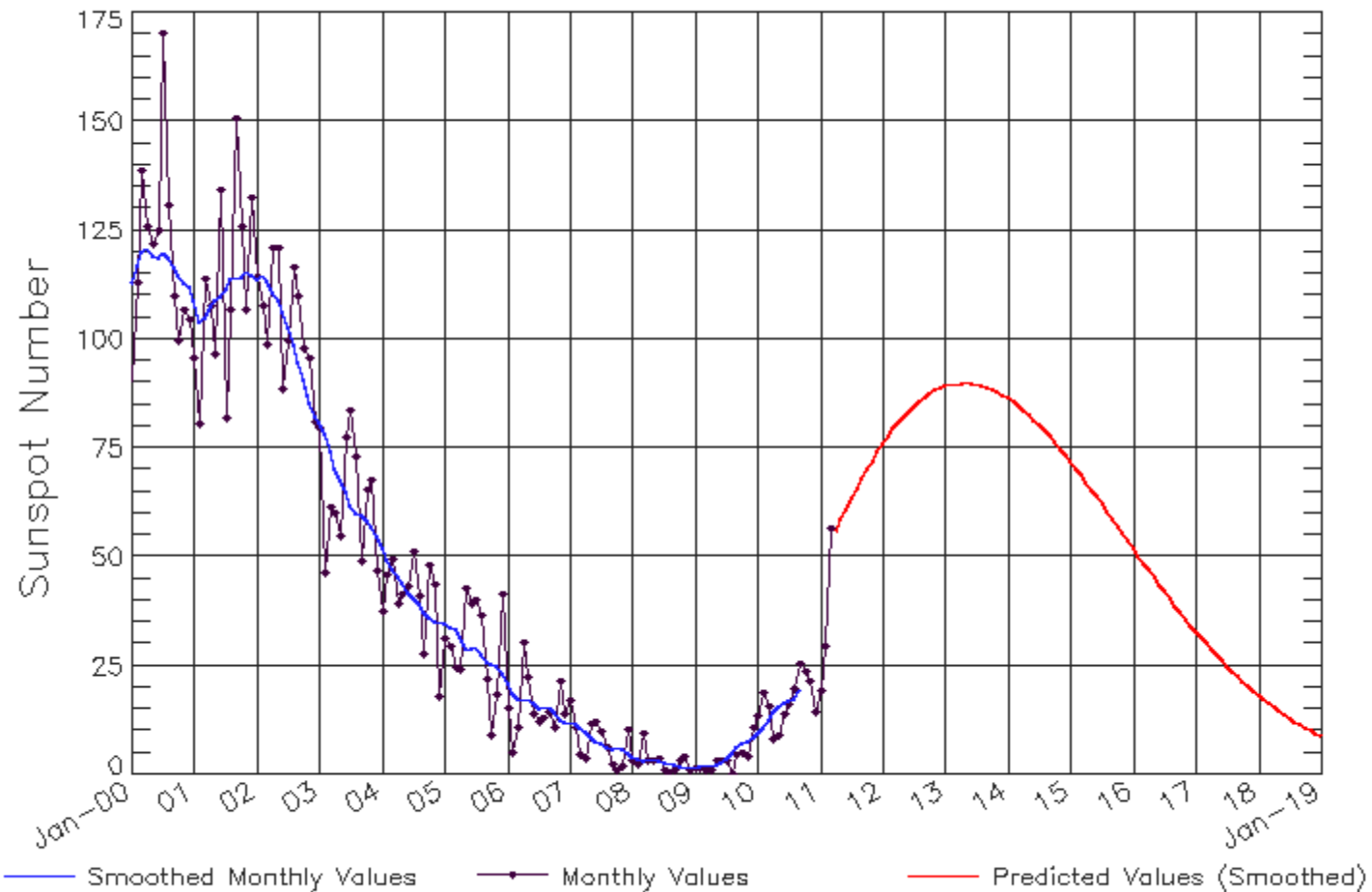


[Neue Zürcher Zeitung, 14 November 2010](#)

Climate policy has almost nothing to do anymore with environmental protection, says the German economist and IPCC official Ottmar Edenhofer. The next world climate summit in Cancun is actually an economy summit during which the distribution of the world’s resources will be negotiated. – Ottmar Edenhofer

Sun Spots

ISES Solar Cycle Sunspot Number Progression
Observed data through Mar 2011



Updated 2011 Apr 5

<http://www.swpc.noaa.gov/solarCycle/>

NOAA/SWPC Boulder, CO USA



Third Saturday Seminar 2010-2011
Humanity at a Crossroads
Session 05
26 March 2011

DNA

Larry Loomis-Price, Phd

Current Events Segment
Curt Gibby

ALL Program, Lone Star College - Montgomery, Conroe,

Don't panic!

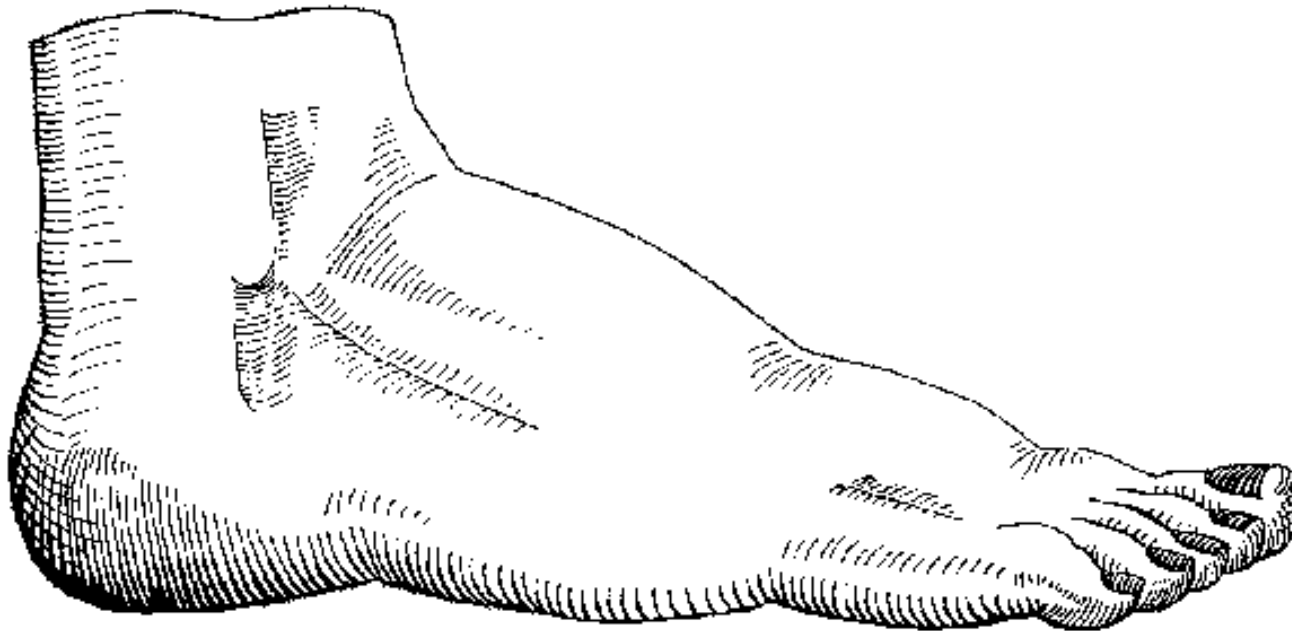
Don't be Panicked!

Welcome back to interesting times !



See You 21 May 2011

The Monty Python Foot, a convenient way to end something that would seem to go on for ever accomplishing nothing.... (*See deus ex machina*)



The famous Python Foot can here be seen in its original format in the bottom left corner of "An Allegory of Venus and Cupid" by [Bronzino](#) (~1545)

When Monty Python had no ending for a skit, this foot would appear out of the sky and squash whatever was on screen with a rude noise. Allowing the show to move on.

Enrichment Material

What makes you an Authority?

The word authority comes from the word *author*. And the word author has a Latin root. It means: “he who enables growth”.

So, the person whom you recognize as an authority is a person who enables your growth.

The others are the ones to decide if I am an authority to them or not.

What makes you an Authority?

Your personal abilities:

1. Your Inner Power
2. Your knowledge

Authority and Inner Power:

I just said the true Authority is the result of your Inner Power.

This means I would judge your sense of Authority at your Inner Power.

<http://www.luismartinssimoes.com/2009/07/how-to-be-respected/>

Authority and Inner Power:

Yet, most people will judge your authority by **how you appear** and **how you act**.

We could call this your intrapersonal intelligence and your interpersonal intelligence.

People will confuse your Inner Power with your appearance and your acts, which are part of the ego.

This means that may you be totally genuine or totally faked, you will be an authority for someone.

Some will like a person's big ego and strong personality.

And he will be considered as an authority to them. That's their choice.

Some others will prefer another person's genuine vibration and ability to connect and recognize the source, and he will be considered as an authority to them.

It's always the others' choice.

<http://www.luismartinssimoes.com/2009/07/how-to-be-respected/>

Authority and Knowledge:

You can be considered an authority for thousands of characteristics:

It can be because you are a good listener, or because you react calmly and softly to others' fragilities, or because you are good at saying No, or because you have no fears, or because you verbalize and observe your emotions...

If you are an individual who is very much identified with your ego, you will recognize authority to egotistic people.

If you are an individual who prefers to connect to the Source, to the I Am, you will recognize authority in spiritual people, for example, but not in egotistic people.

Authority and Knowledge:

Your knowledge is your ability to master [Instruction on Matter](#).

People will like your knowledge in Economy, or in Finance, or in Law, or in Philosophy, or in Engineering , or in Astrology, or in Painting...

This means authority does not claim for obedience, never!

Only someone who feels that his authority may be at stake will claim for obedience thru the use of power.

Power inspires fear.

Authority inspires respect.

<http://www.luismartinssimoes.com/2009/07/how-to-be-respected/>

RETURN of the ELDERS UNLEASH YOUR WISDOM

It's time for the Return of the ELDERS! Previous successful societies relied on the councils of their ELDERS to offer WISDOM in times of confusion. Folks, we can't quit yet.

What does Authority mean?

The true Authority is the result of your inner power. It's the wisdom that comes from within.

It has to do with your connection [to the source, to the I Am](#).

Authority has nothing to do with the verb to have, but rather with the verb to be.

You do not have authority. You are seen as an authority.

The big difference between the External Power and Authority lies in the fact that authority cannot be imposed, it needs to be recognized.

So your authority depends on those who look at you.

Some people may recognize your authority and some others may not.

And you cannot do anything about it.

This is why people who are very much identified with their ego, and thus seeking for others approval, can't stand those who do not recognize their authority and hence use power to submit them by force.

<http://www.luismartinssimoes.com/2009/07/how-to-be-respected/>

Accepting the challenge

Many of you have in fact made real contributions during your lifetimes and careers. And now you feel you have earned a rest and start cashing in your chips and enjoying the good life.

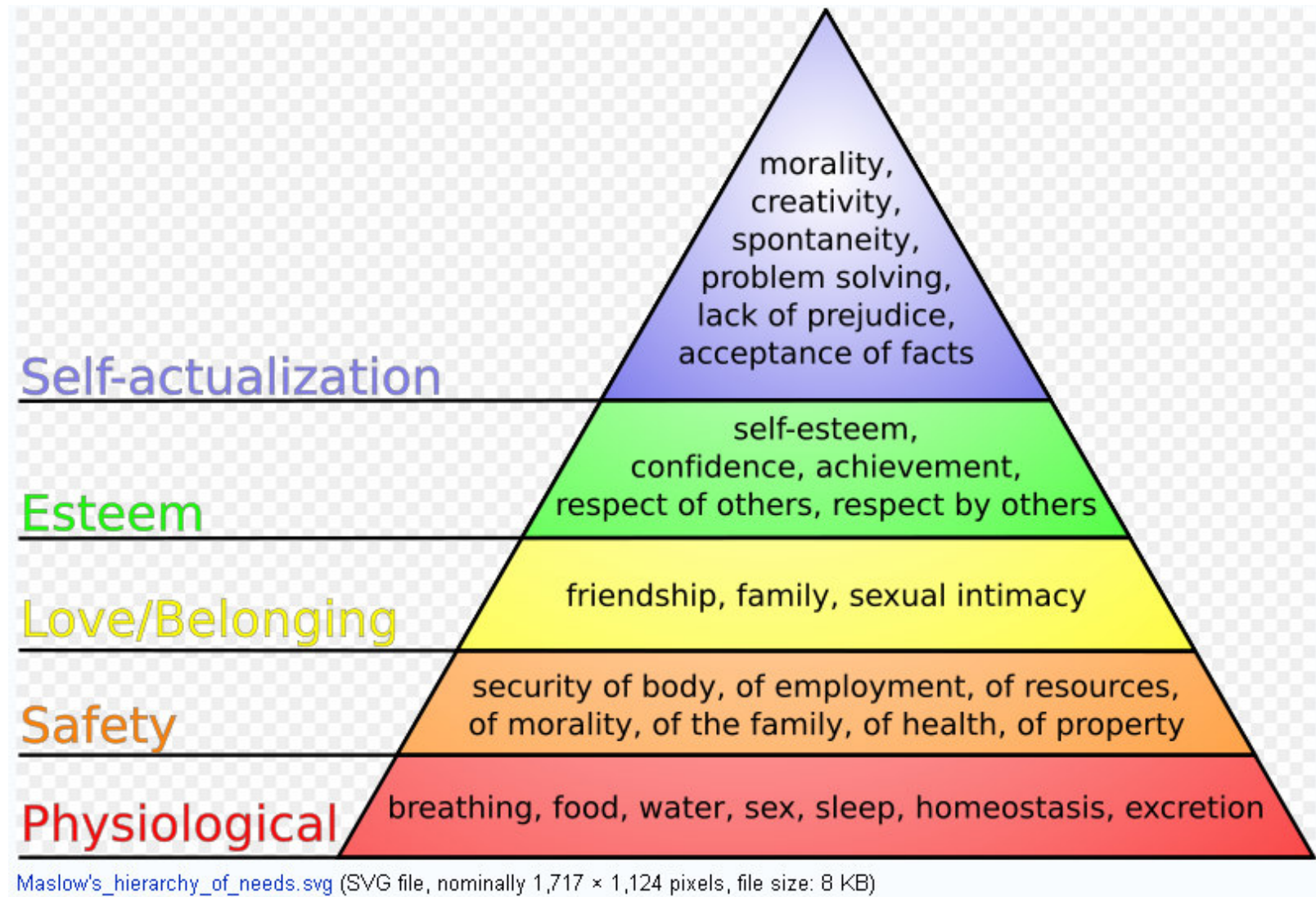
Not so fast, I'm afraid. We still have work to do if we are going to still have the America we thought we were going to have, but we see disappearing.

One of life's persistent questions:

“Why do cockroaches roll over before the die?”



Mazlow's Hierachy of Needs



It all connects

Fear, War, Greed

To much capital in the hands of the few

Too little money in the hands of the consumers.

Credit is not a replacement for disposable income

Oil is a limited resource

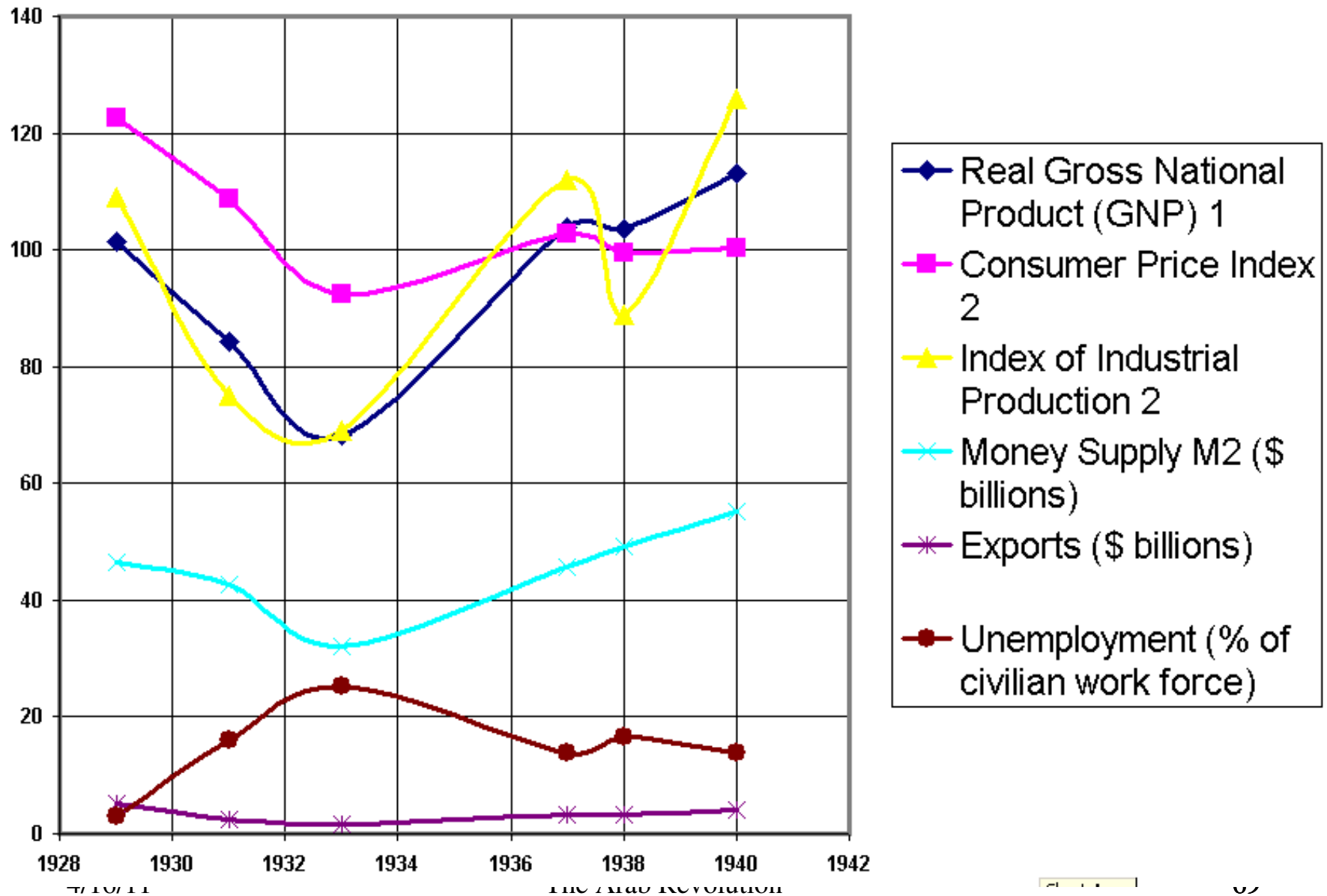
Unable to anticipate what looks obvious in retrospect

Trusting of Authority

Lacking critical ability/Education

Etc.

The Years of the Great Depression



Don't just be a thermometer, Be a thermostat

Jill Carroll

**“...we are the leaders we've
been looking for.”**

Grace Lee Boggs

Basic Wilderness Survival Skills

From: **British Columbia Outdoor Wilderness Guide**

Fear - For anyone faced with a wilderness emergency survival situation, fear is a normal reaction. Unless an emergency situation has been anticipated, fear is generally followed by panic then pain, cold, thirst, hunger, fatigue, boredom and loneliness. It is extremely important to calmly assess the situation and not allow these seven enemies to interfere with your survival.

Pain - Pain may often be ignored in a panic situation. Remember to deal with injuries immediately before they become even more serious.

Cold - Cold lowers the ability to think, numbing the body and reducing the will to survive. Never allow yourself to stop moving or to fall asleep unless adequately sheltered.

Thirst - Dehydration is a common enemy in an emergency situation and must not be ignored. It can dull your mind, causing you to overlook important survival information.

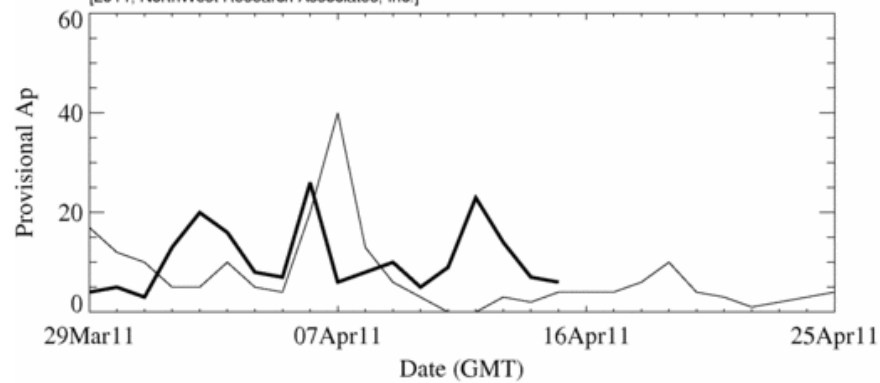
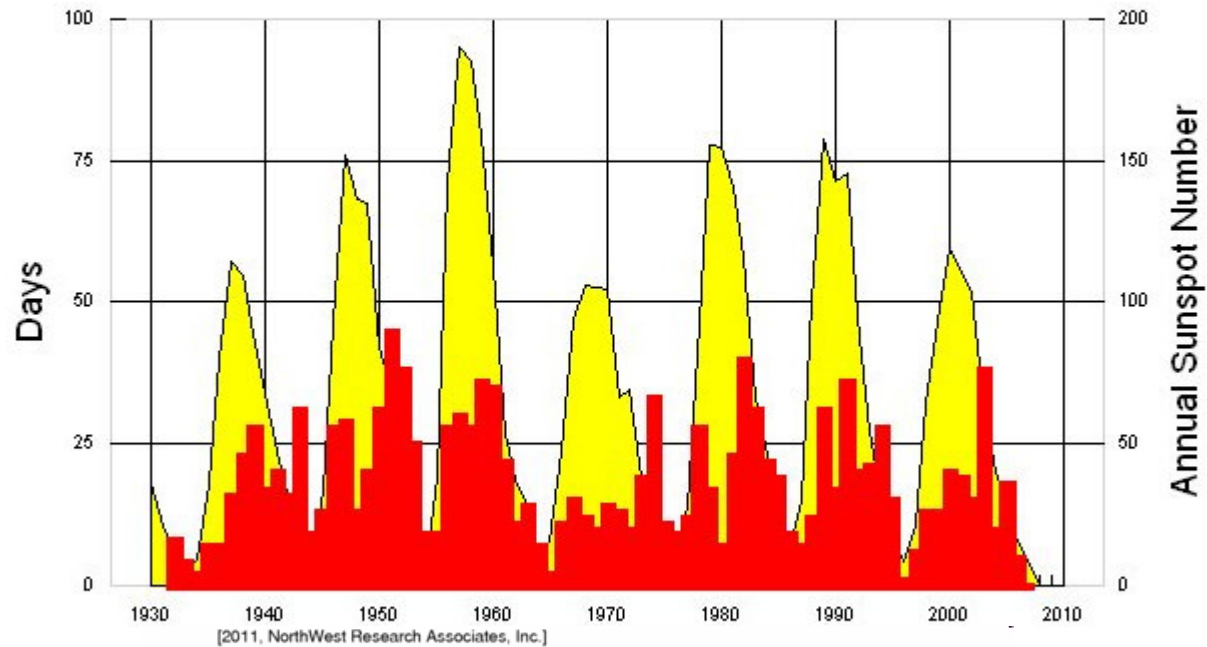
Hunger - Hunger is dangerous but seldom deadly. It may reduce your ability to think logically and increase your susceptibility to the effects of cold, pain and fear.

Fatigue - Fatigue is unavoidable in any situation so it is best to keep in mind that it can and will lower your mental ability. Remember that in an emergency situation this is often the body's way of escaping a difficult situation.

Boredom & Loneliness - These enemies are quite often unanticipated and may lower mind's ability to deal with the situation.

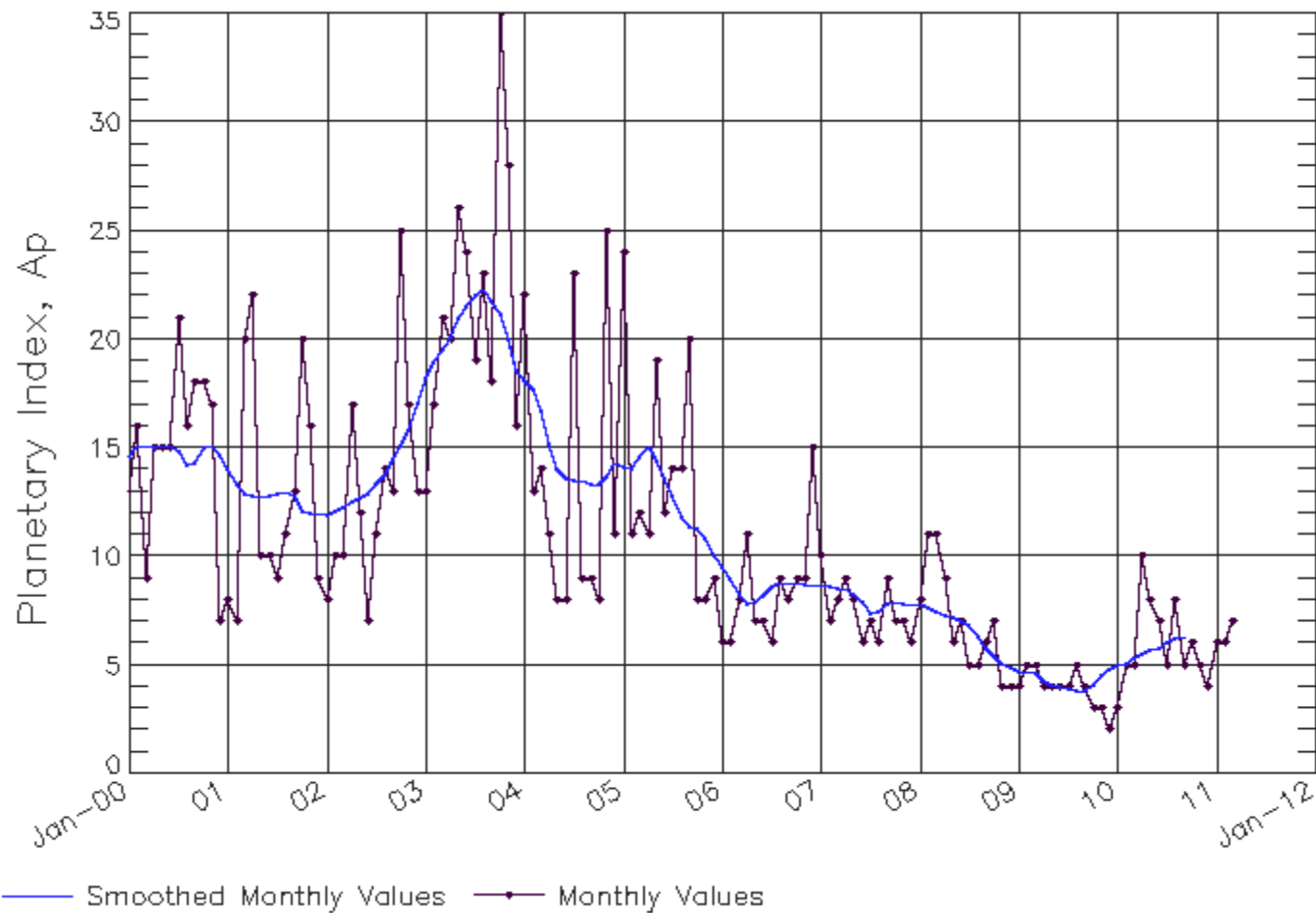
<http://www.ngdc.noaa.gov/stp/geomag/image/apstar07.jpg>

**Number of Days $A_p^* \geq 40$
1932 - 2007**



<http://www.swpc.noaa.gov/SolarCycle/>

ISES Solar Cycle Ap Progression
Observed data through Mar 2011



Updated 2011 Apr 5

NOAA/SWPC Boulder, CO USA